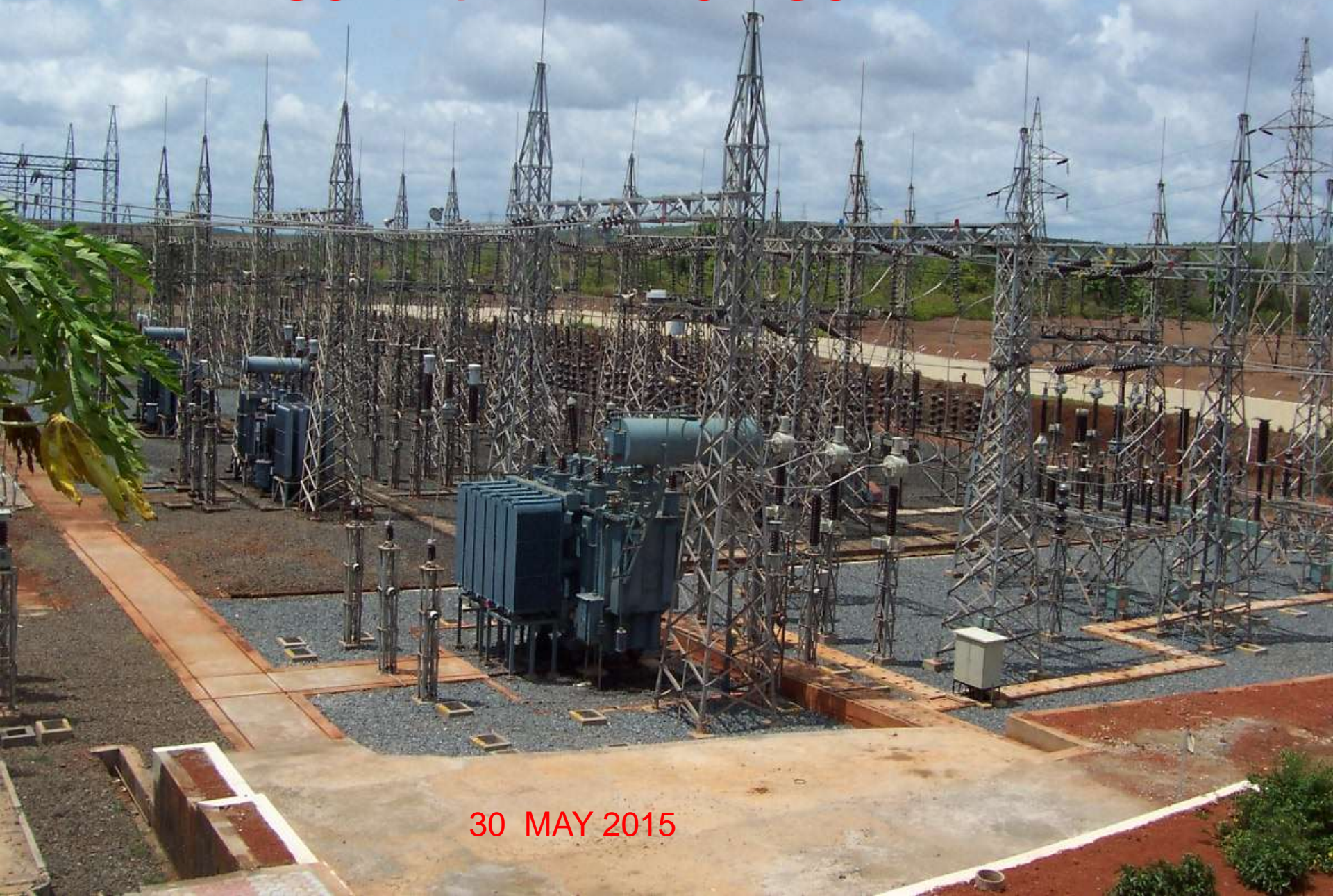


ELECTRICITY DEPARTMENT GOVERNMENT OF GOA



30 MAY 2015

GROWTH OF POWER SECTOR IN GOA

Power scenario at time of liberation of Goa in 1961

- Electrification: Only 7 towns
No Villages were Electrified
- Generation Capacity: 5.5MW through private licencees
- No of Consumers: 6000
- Maximum Demand: 2.2MW
- Per Capita consumption : 13 KWH

Electricity Department was formed in 1963

Present Power Scenario

Consumers	- 5.80 Lakhs
Maximum Demand	- 552 MW
Length of lines	- Around 17000 ckms.
Sub-Stations	- 52 Nos 33/11 KV 5 Nos. 220 KV 2 Nos. 110 KV
Transformation Capacity (At EHV Level)	- 1150 MVA
Distribution Trans. Centres	- 6088 Nos
Electrification	-Completed (except few pockets)
Metering.	- 100%
Per Capita Consumption	- 2000 KWH

AVAILABILITY OF POWER FOR GOA

PRESENT POWER ALLOCATION OF CENTRAL SECTOR STATIONS FOR GOA

Generating Stations	Peak Hours (18.00 to 22.00 hours)			Off-Peak hours (0.00 to 18.00 & 22.00 to 24.00)		
	Share from firm allocation (MW)	Share from unallocated allocation (MW)	Total allocation (MW)	Share from firm allocation (MW)	Share from unallocated allocation (MW)	Total allocation (MW)
KSTPS	210	2.73	212.73	210	4.38	214.38
VSTPS-I	35	2.43	37.43	35	3.91	38.91
VSTPS-II	12	1.84	13.84	12	2.95	14.95
VSTPS-III	10	1.84	11.84	10	2.95	12.95
VSTPS-IV	11.2	2.58	13.78	11.2	4.13	15.33
SIPAT Stage-I	20	5.10	25.10	20	8.19	28.19
SIPAT-II	10	1.75	11.75	10	2.81	12.81
MSTPS-I	11.2	2.58	13.78	11.2	4.13	15.33
KAPP	15	0.67	15.67	15	1.07	16.07
TAPP-3&4	11	2.27	13.27	11	3.63	14.63
KSTPS-7	4.5	1.29	5.79	4.5	2.07	6.57
KGPP	0	12.37	12.37	0	12.37	12.37
GGPP	0	12.63	12.63	0	12.63	12.63
TOTAL (WR)	349.9	50.08	399.98	349.9	65.22	415.12
RSTPS SR	100	0	100	100	0	100
TOTAL	449.9	50.08	499.98	449.9	65.22	515.12

Besides above share, Power from Ratnagiri Gas and Power Project Ltd. is 19.67 MW which is not available due to technical minimum requirement for operation is not met as MSEDCL is not scheduling the power.

Power Allocation, Generation within state, Demand & Deficit of ED- Goa

Sr No	Power Allocation	2012-13		2013-14		2014-15	
		Peak	Off Peak	Peak	Off Peak	Peak	Off peak
1	C.G.S. Allocation						
2	Western Region(MW)			368.89	384.38	399.98	415.12
3	Southern Region(MW)			100.00	100.00	100.00	100.00
4	Total(MW)	450.13	462.92	468.89	484.38	499.98	515.12
5	Co-Generation(MW)	1-14		1-14		1-16	
6	RPO	%	MU	%	MU	%	MU
7	1) Solar	0.40	11.54	0.40	11.85	0.60	18.35
8	2) Non Solar	2.60	75.03	2.60	78.86	2.70	83.40
9	Maximum Demand(MW)	513		530		552	
10	Deficit requirement met through trader/overdrawl	<ul style="list-style-type: none"> •Trader-20.82 MU •O/D-60.00 MU 		<ul style="list-style-type: none"> •O/D-77.75 MU 		<ul style="list-style-type: none"> •Trader-154.70 •O/D-100.03 MU 	

CO-GENERATION WITHIN THE STATE

- | | |
|------------------------------|------------|
| a) Goa Energy Pvt. Ltd. | 12 – 14 MW |
| b) Goa Sponge and Power Ltd. | 1 – 2 MW |
| c) Sesa Sterlite Ltd | 2 MW |

SOLAR POWER

- | | |
|--|-------|
| 1) Supply through NVVNL
(to meet backlog from 10-11 to 14-15) | 6 MW |
| 2) Tied up through SECIL | 25 MW |

NON SOLAR POWER

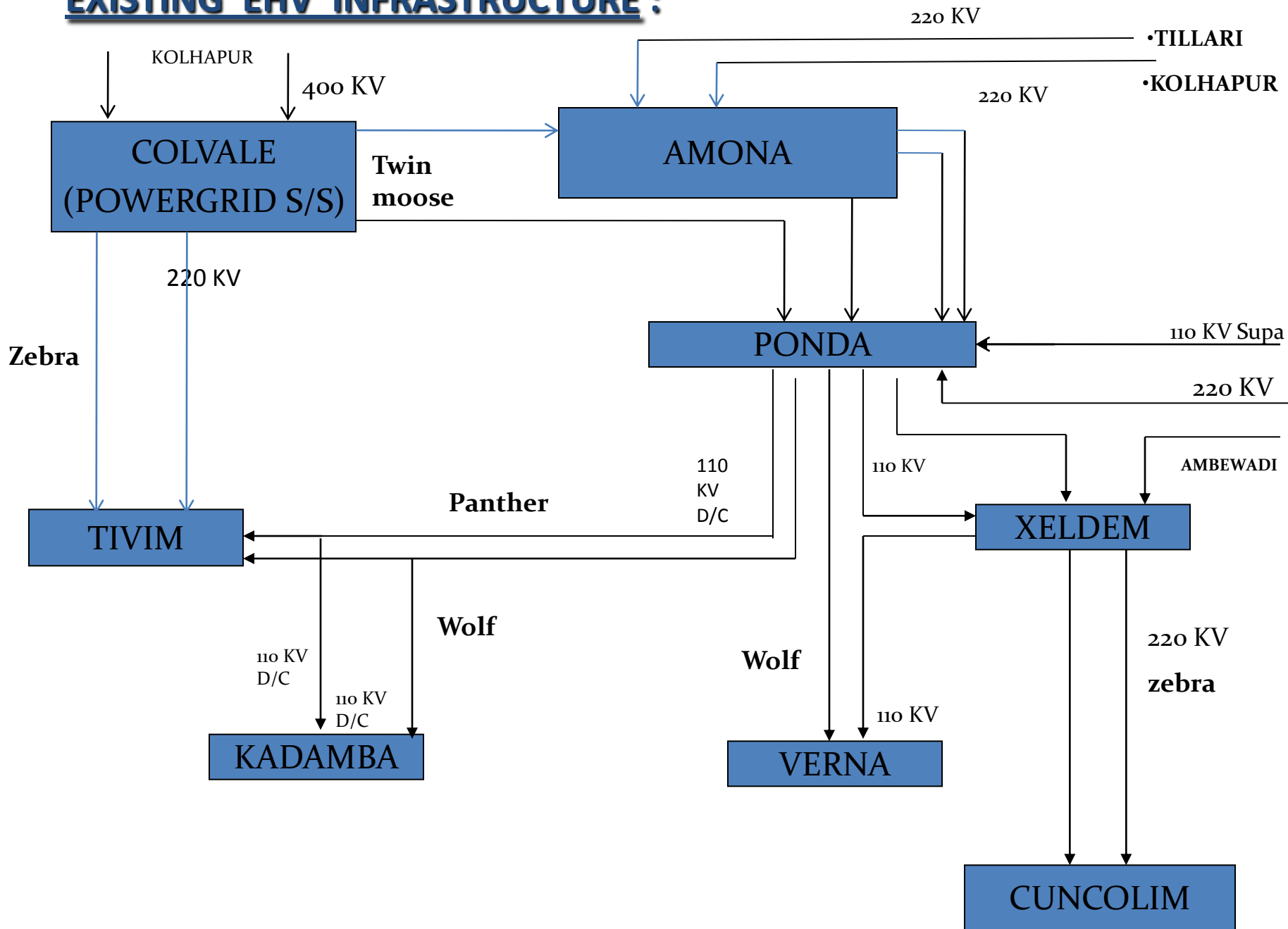
Proposal is underway for 10 MW Hydel Power plus procurement of REC.

Plan Outlays of the Department for the last six years:

(Rs. in Crores)

2010-11	2011-12	2012-13 R.E	2013-14	2014-15	2015-16 B.E
218.24	197.24	234.94	177.92	206.37	651.14

EXISTING EHV INFRASTRUCTURE :



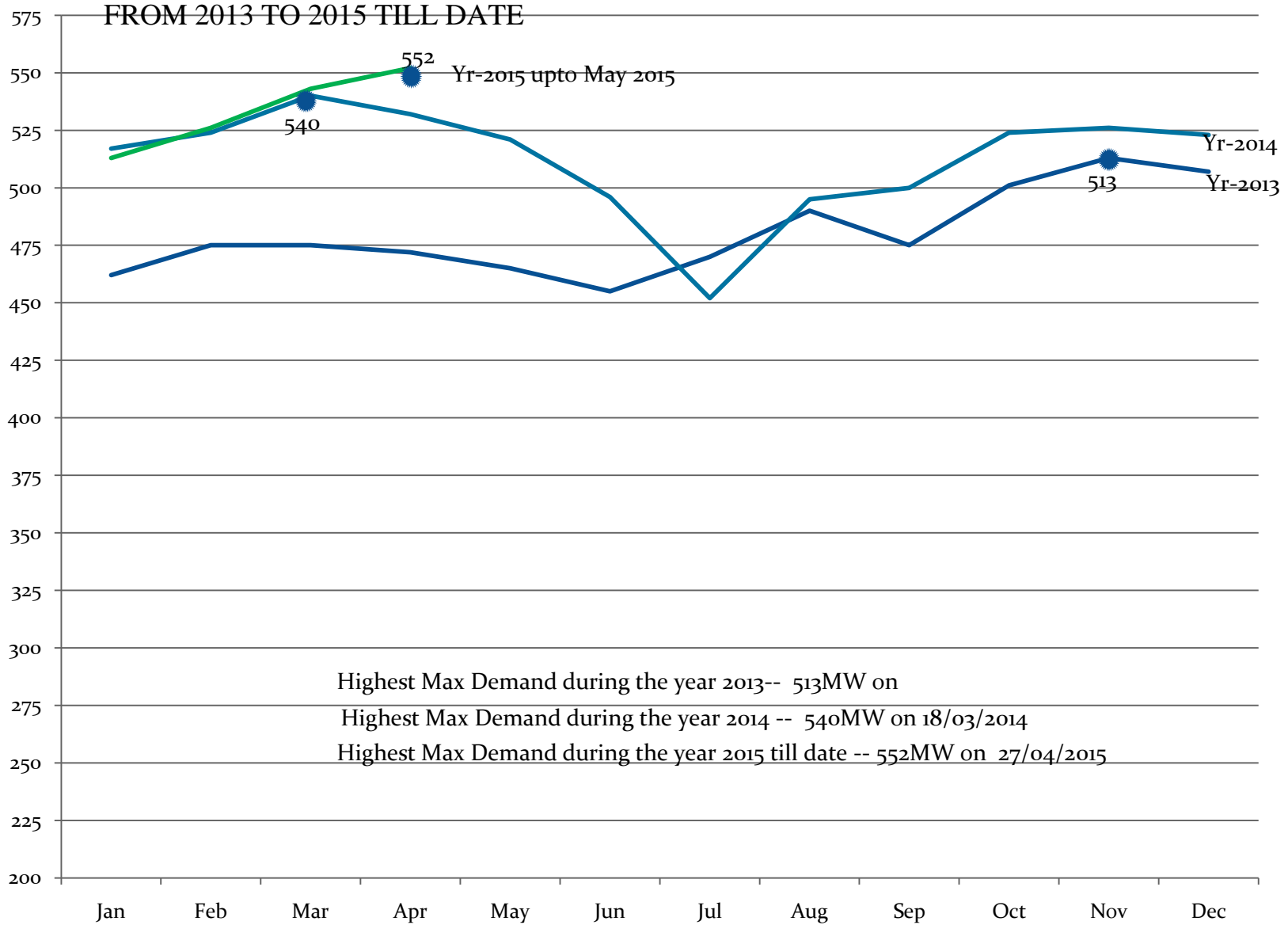
GRAPHICAL REPRESENTATION OF MAXIMUM DEMAND FOR THREE YEARS FROM 2013 TO 2015 TILL DATE

M
A
X
I
M
U
M

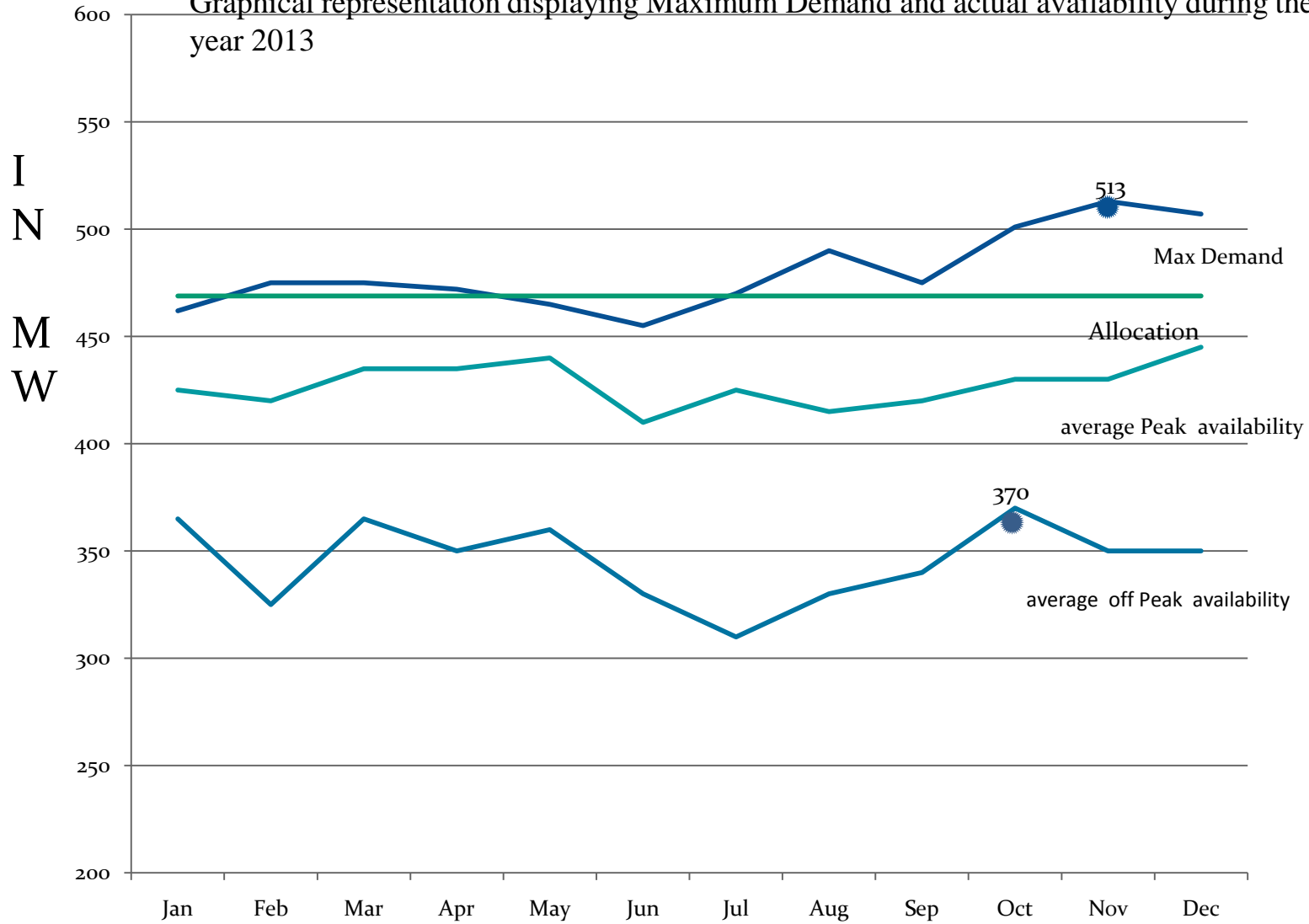
D
E
M
A
N
D

I
N

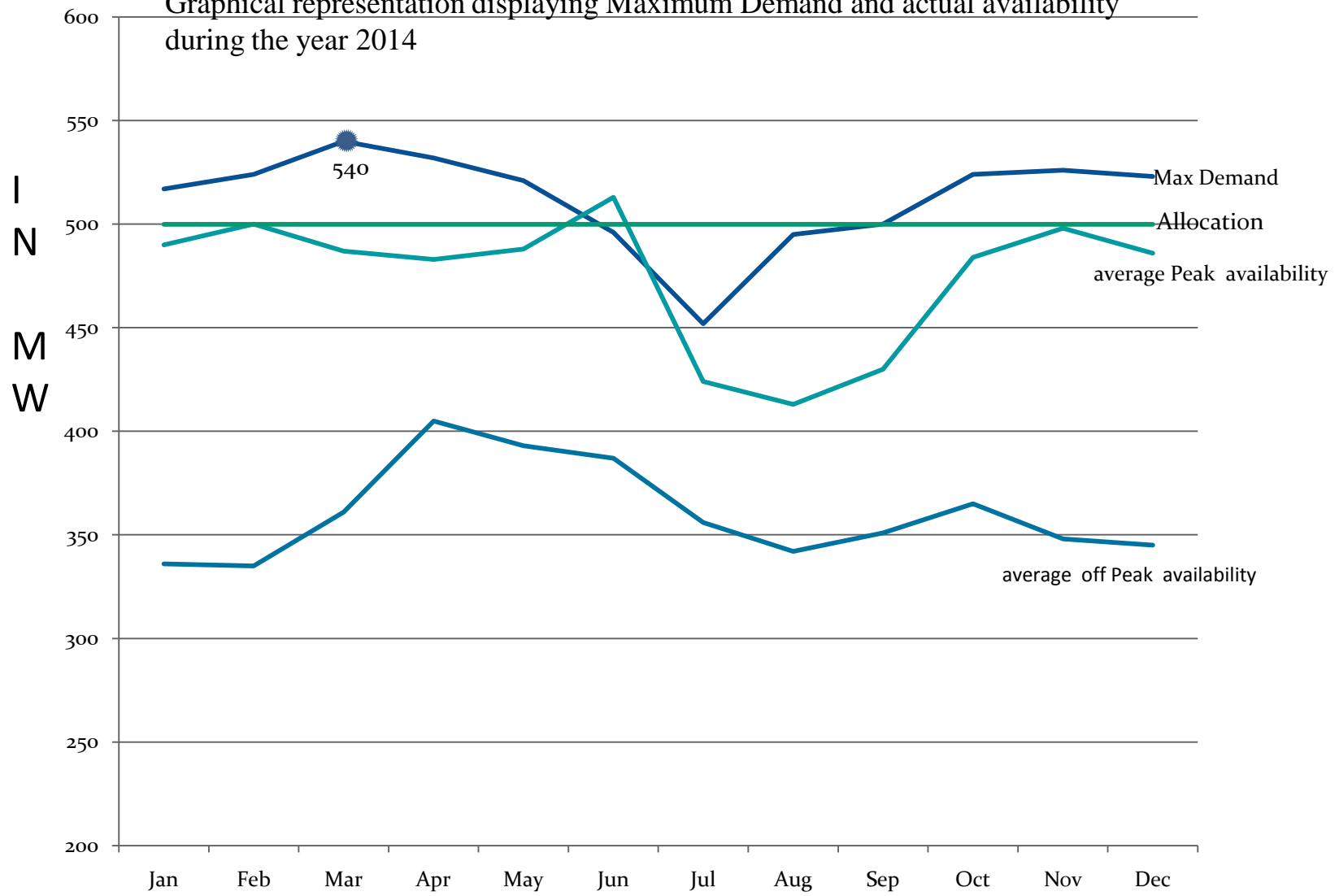
M
W



Graphical representation displaying Maximum Demand and actual availability during the year 2013



Graphical representation displaying Maximum Demand and actual availability during the year 2014



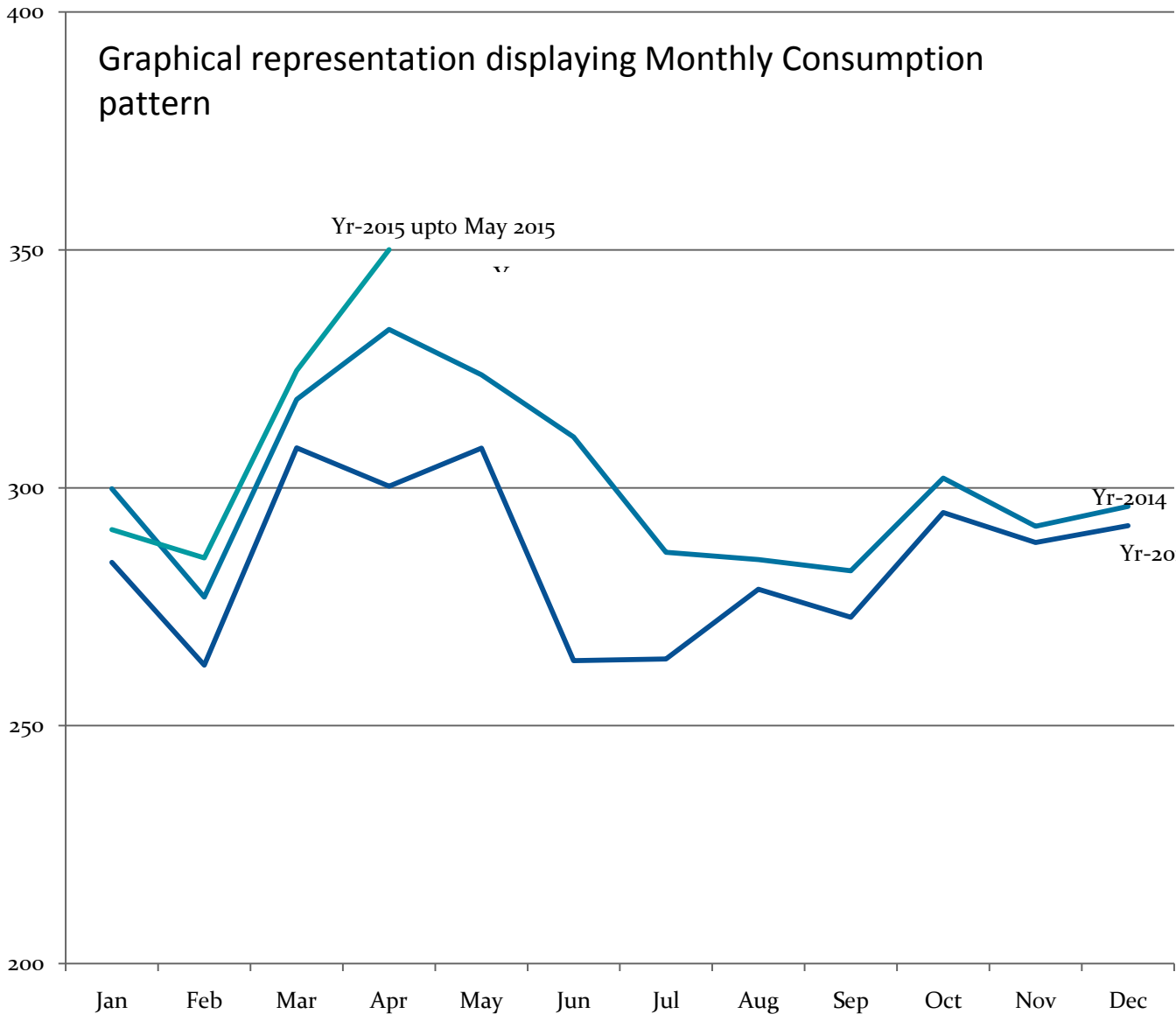
M
O
N
T
H
L
Y

C
O
N
S
U
M
P
T
I
O
N

I
N

M
I
L
L
I
O
N

U
N
I
T
S



Thank You